

# WHERE?

In Great Britain

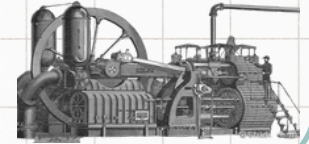


# WHAT WAS IT?

In the 18th century a series of revolutionary changes affected all sectors of the economy and society

# TWO DECISIVE ELEMENTS

- Factory
- Steam engine



# FACTORS

- Population growth
- The agriculture revolution
- The existence of large markets
- The entrepreneurial mentality of bourgeoisie
- An abundance of iron and coal deposit.



# INDUSTRIAL REVOLUTION

MATHEUS VIEIRA 4ºB

# FIRST INDUSTRIES

The cotton textile industry, it was the first sector to introduce technical innovations.

The iron industry. They were powered by charcoal



# ENERGY

In the First Industrial Revolution, people used coal. In the Second Industrial Revolution, people used petroleum and electricity.



# ADVANCED TRANSPORT

- The railway
- Steamboats
- Automobile
- Aeroplane



# NEW SOCIETY

Population growth and mass migration, A new the industrial city urban model

- **A new class system**
- **The upper classes:** aristocracy and high bourgeoisie
- **Middle classes** doctors, teachers and merchants
- **The lower classes:** peasantry, proletariat and domestic servants

